

CUBE INTERNATIONAL W.L.L.



Contact us:

PHONE- +973 39655787

TELEPHONE- +973 77900123

E-MAIL- CUBEINTERNATIONAL@BATELCO.COM.BH

WEBSITE- WWW.CUBEBAHRAIN.COM

ADDRESS- SHOP 27, BUILDING 2618, ROAD: 1537, HIDD 115





ABOUT US...

Cube International W.L.L. was established in Bahrain in the year 2010. In the early beginning stages, Cube International W.L.L. was known as Cube Fabrication and Mechanical Items. We are specialised in offering advanced metal fabrication services and mechanical products.

During our business period, we went through many crests and troughs. But we overcame them with the eminent support of our company, staff and customers. We are always grateful towards the kind customers who stood with us united in every angle of market. The trademark behind our success is the coordination and teamwork under enthusiastic leadership.

When certain firms faced the limited availability of readymade equipment, we came forward with design and fabrication of the same product as custom-built. The trust each customer emphasises on us led to the popularity among the mechanical industries in Bahrain. When any client approaches our company they are not left empty handed or dissatisfied. If happened so, we rectify that in every later work we take over. Customers rely on our willingness to attend every challenging project.



OUR TEAM AND FACILITIES...

The company is headed by well qualified experienced managers and engineers, assisted by a team of dedicated supervisory staff. Our administration and customer services are available 24 x 7 for any kind of mechanical aiding. We have a well organised team comprising of project manager, AutoCAD designer, engineers, site foreman, skilled and unskilled labours. We do concentrate in strategy management and rectify backlog. Our manpower includes highly skilled and certified fabricators, fitters, lathe operators, electrician and helpers working in the health concerned atmosphere with necessary safety accessories. We also have a fleet of vehicles for us to reach every corner of Bahrain anytime for delivery and mechanical assistance.





OUR NOTABLE CLIENTS...





OUR CERTIFICATIONS...

Cube International W.L.L. is an ISO 9001:2015 and 45001:2018 certified organisation. We follow the quality standards to ensure the products and services for every customer. Besides the quality standards, we maintain the OH&S management system to concern a safe and healthy workplace for our staffs and visitors.



CERTIFICATE

Certification No	: 05875/CUB09D
Initial Certification Date	: 07.05.2019
Recertification Date	: 18.11.2022
Issue Date	: 18.11.2022
Expiration Date	: 06.05.2025
Revision Date / No	: 18.11.2022/00

RoyalCert International Registrars, certifies that the management system of the organization has been assessed and found to be in accordance with the requirements of the related standard.

DIN EN ISO 9001:2015
Quality Management Systems –
Requirements (ISO 9001:2015)



Cube International WLL

Factory 27, Building 2618, Road 1537, Block 115, P.O. Box 26629, Hidd Industrial Area, Kingdom of Bahrain

Manufacture of Structural Metal Product, Steel Fabrication; Blasting and Painting Services

General Manager
Chris Markopolo



This certificate was issued in accordance with the Registrar's auditing and certification procedures and is subject to regular surveillance audits. The original certificate is held at a secure location. The Registrar is not liable for any loss or damage to the certificate. For further information, please visit www.royalcert.com

RoyalCert International Registrars GmbH
Humboldt-Strasse 44b, 40525 Frankfurt am Main, Germany
T: +49 69 457 10080
www.royalcert.com



CERTIFICATE

Certification No	: 05875/CUB45D
Initial Certification Date	: 23.10.2019
Recertification Date	: 18.11.2022
Issue Date	: 18.11.2022
Expiration Date	: 22.10.2025
Revision Date / No	: 18.11.2022/00

RoyalCert International Registrars, certifies that the management system of the organization has been assessed and found to be in accordance with the requirements of the related standard.

DIN ISO 45001:2018
Occupational Health and Safety Management Systems –
Requirements (ISO 45001:2018)



Cube International WLL

Factory 27, Building 2618, Road 1537, Block 115, P.O. Box 26629, Hidd Industrial Area, Kingdom of Bahrain

Manufacture of Structural Metal Product, Steel Fabrication; Blasting and Painting Services

General Manager
Chris Markopolo



This certificate was issued in accordance with the Registrar's auditing and certification procedures and is subject to regular surveillance audits. The original certificate is held at a secure location. The Registrar is not liable for any loss or damage to the certificate. For further information, please visit www.royalcert.com

RoyalCert International Registrars GmbH
Humboldt-Strasse 44b, 40525 Frankfurt am Main, Germany
T: +49 69 457 10080
www.royalcert.com

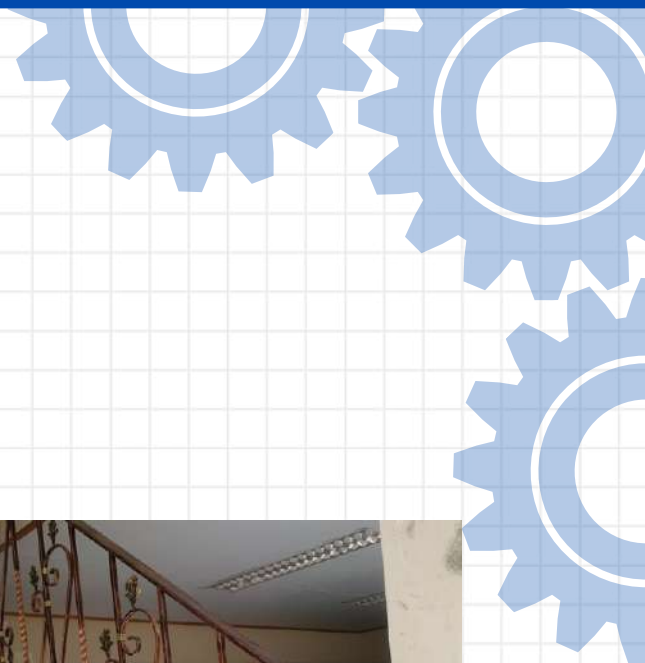


OUR PRODUCTS AND SERVICES...

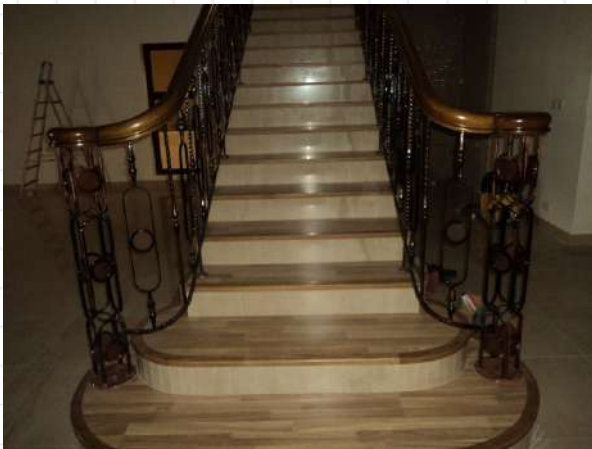
We are devoted to complete the task as defined by the customer and deliver the results that meet or exceed the project's specifications. None of our items are widely available; they are all manufactured to order. So, we make sure that the consumer receives the essential satisfaction while also fulfilling their genuine necessity.

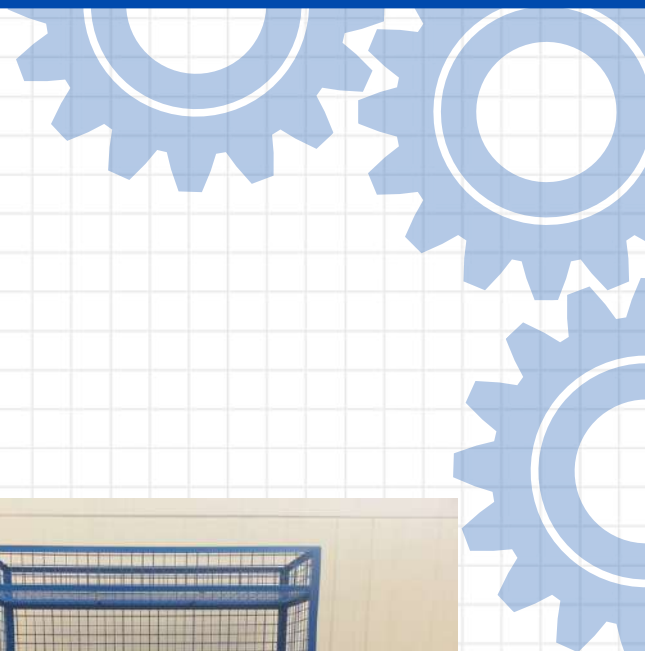
We undertake all types of steel fabrication like mild steel, stainless steel, aluminium, copper, etc. specialized in Aluminium and Stainless steel welding by TIG & MIG. All types of electrical & mechanical work maintenance, repair etc.

Interior work – all kinds of painting work, gypsum work, flooring with wood, tile, marble & granite., fixing of curtain blinds and wall paper work. Industrial construction including steel structural works, cladding & roofing work. Construction of public parks, play fields, RCC structures etc. We provides (trained and experts) manpower supply.



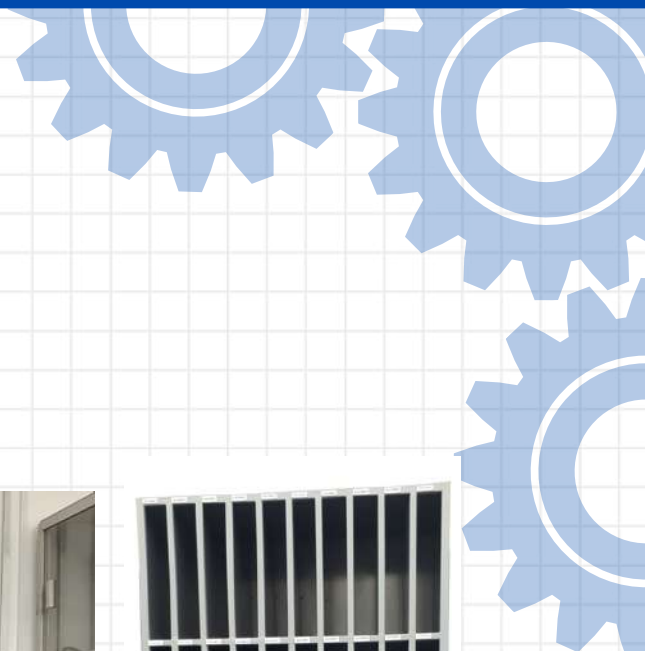
HANDRAILS...





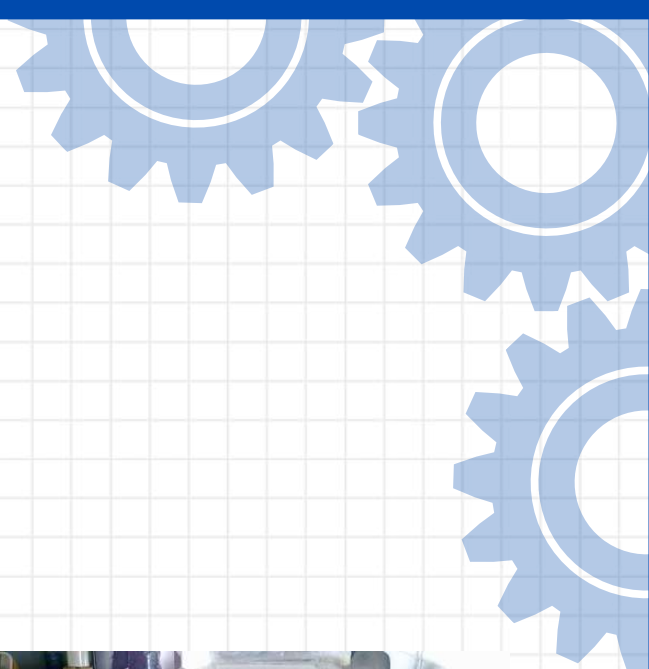
RACK / CABINET / LOCKER...





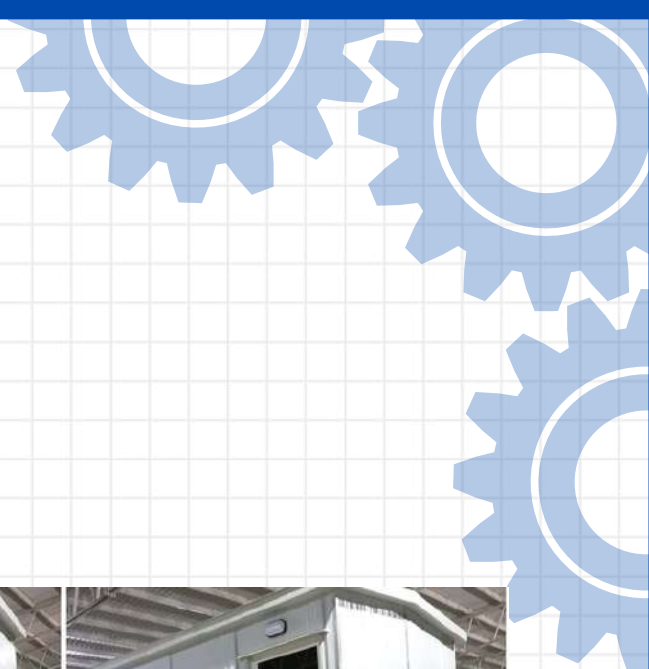
RACK / CABINET / LOCKER...





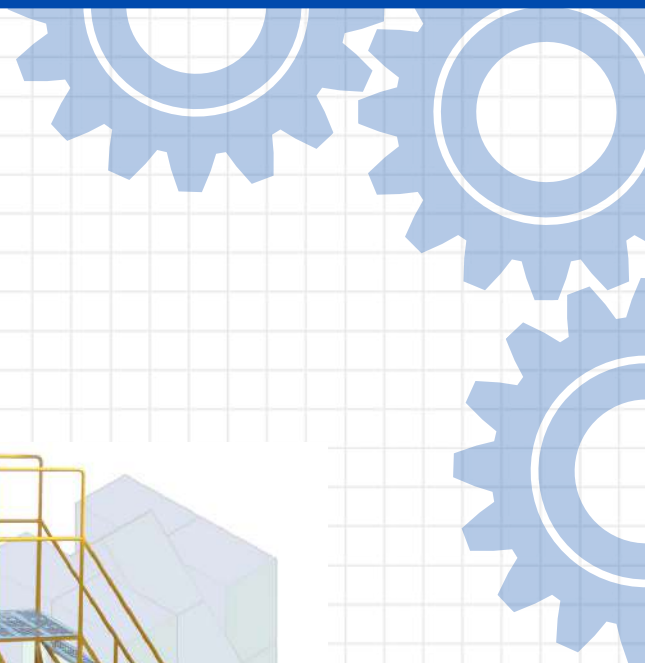
TABLE/WORK-STAND/BENCH....



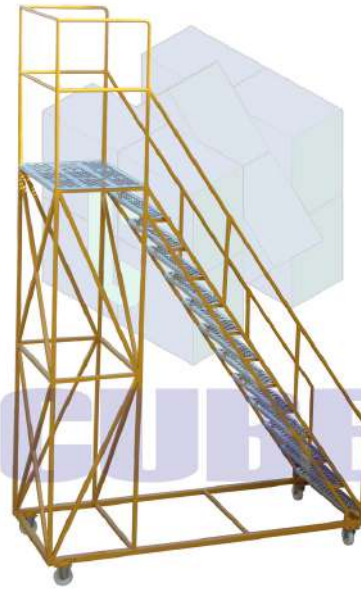


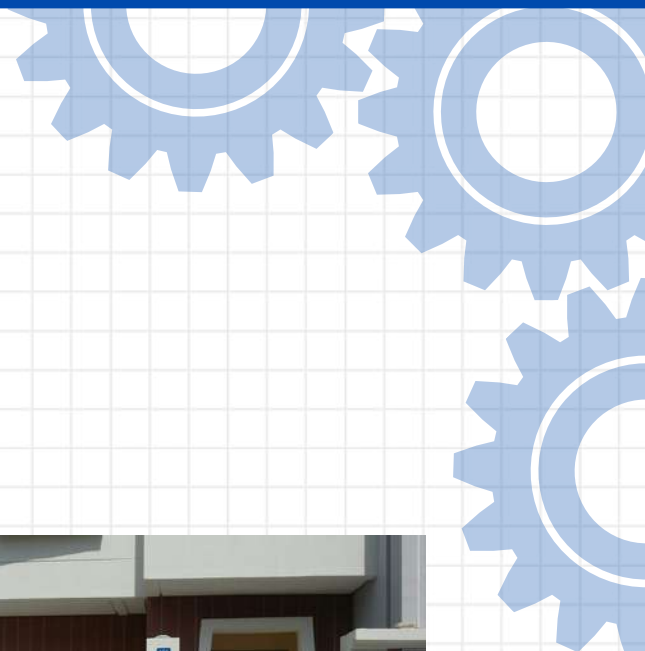
LADDER/CREW STEPS/STAIRCASE





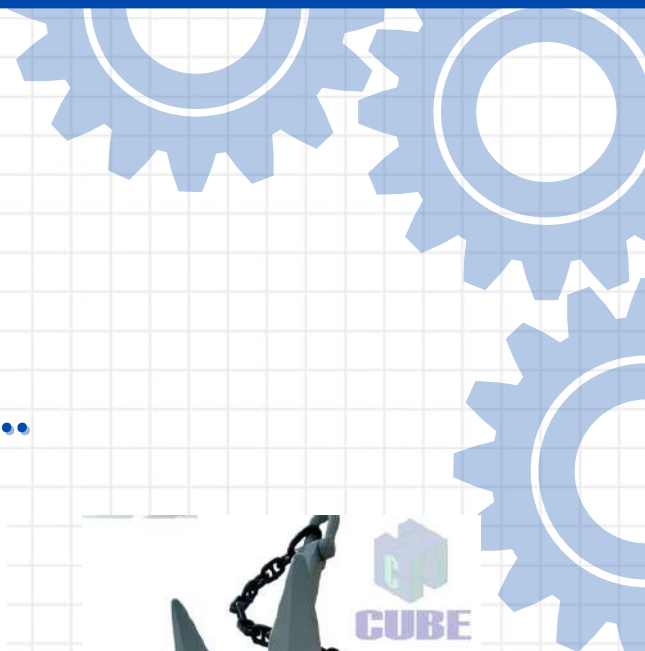
CREW STEPS...





SLIDING GATE/PEDESTAL GATE



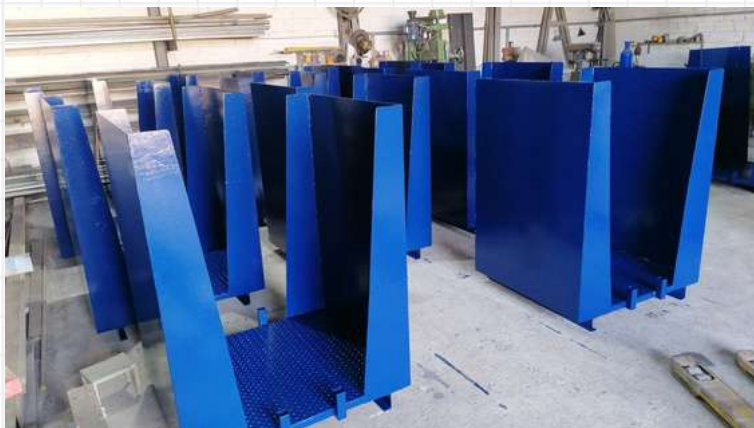


STEEL PRODUCTS/CUSTOM MADE...



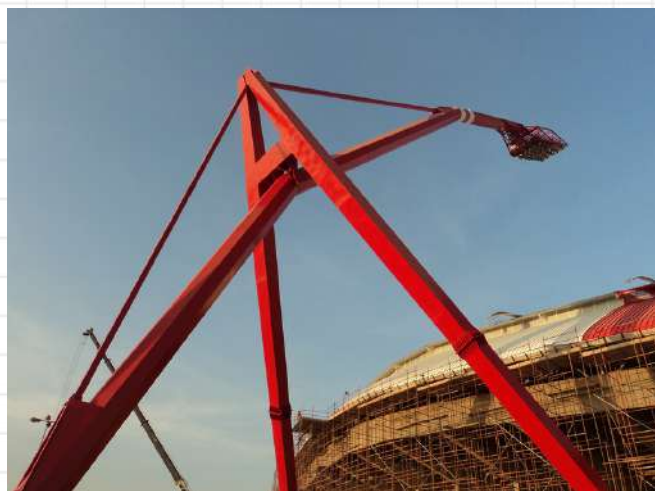


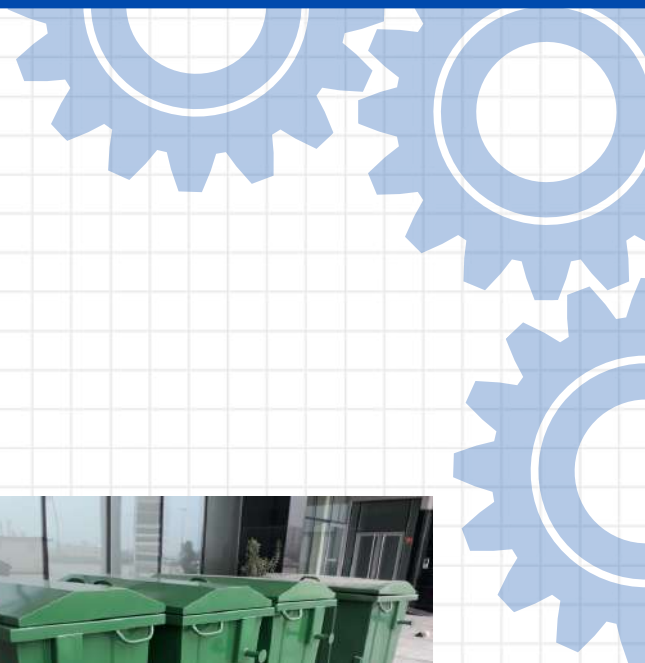
STEEL PRODUCTS/CUSTOM MADE...





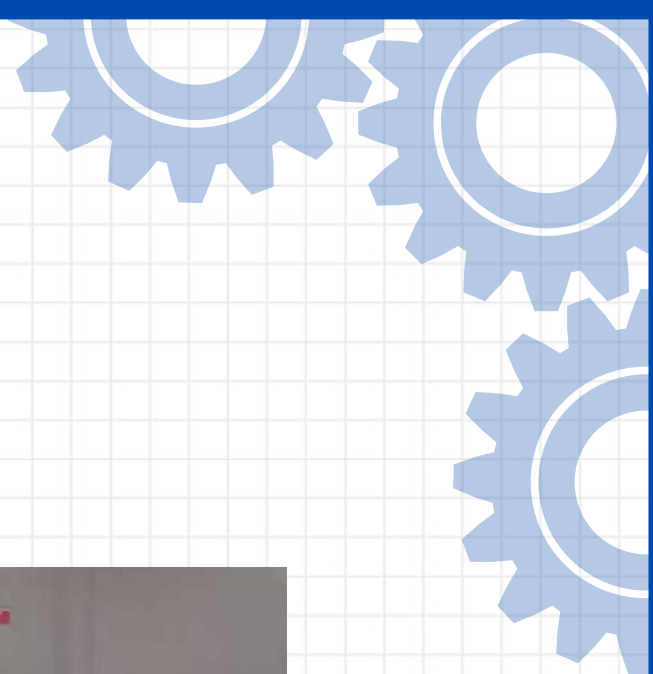
BOUNDARY WALL/ FENCE WORK/ PAINTING...





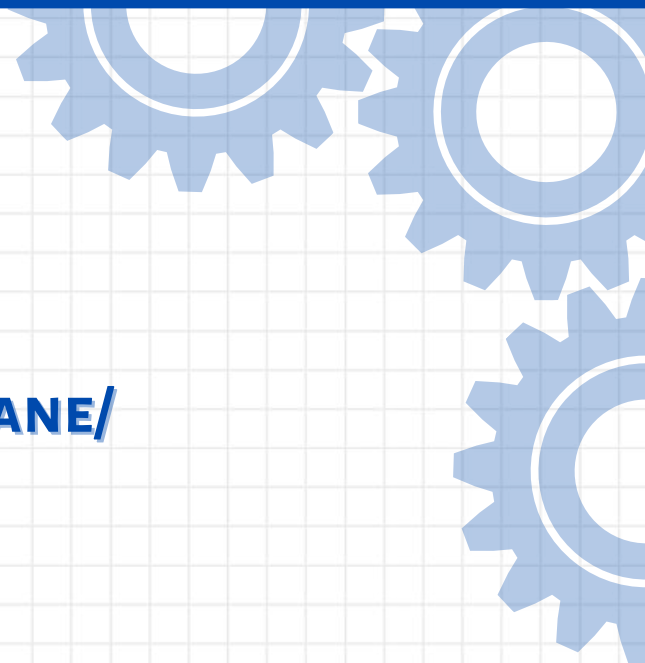
BIN/SKIP BUCKET/TRASH





GANGWAY/BRIDGES





MAN-LIFTING EQUIPMENT/JIB CRANE/

ALUMINUM JIB CRANE





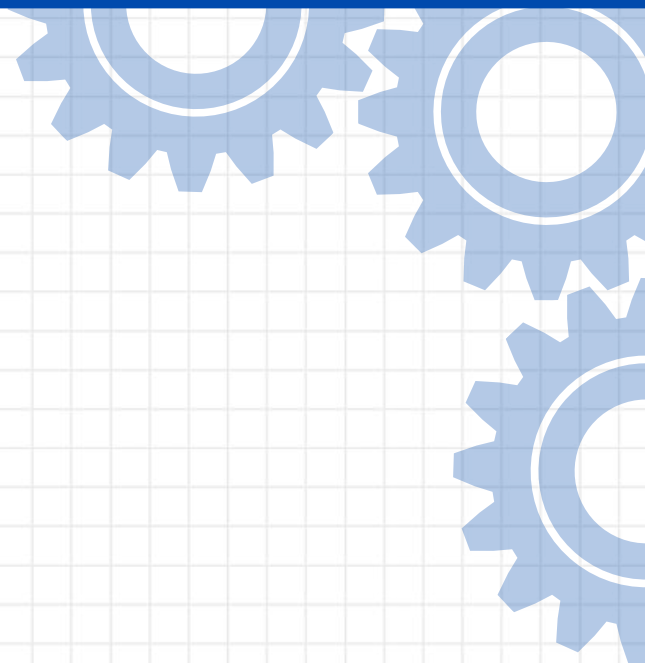
TRAILER/CARGO HANDLING EQUIPMENT





TROLLEY...





ROLLER CONVEYOR





MACHINED PARTS





TIG/MIG/ARC/ALUMINIUM WELDING

